



SNOMED NZ Hui

21 April 2026



Opening karakia

Whakataka Te Hau

Whakataka te hau ki te uru
Whakataka te hau ki te tonga
Kia mākinakina ki uta
Kia mātaratara ki tai
E hī ake ana te atakura
He tio, he huka, he hauhū
Thei mauri ora

*Get ready for the westerly
and be prepared for the southerly.
It will be icy cold inland,
and icy cold on the shore.
May the dawn rise red-tipped on ice,
on snow, on frost*

Alastair Kenworthy (he/him)

SNOMED General Assembly
SNOMED NRC Manager



Steph Kerruish (she/her)

SNOMED E-Learning Advisory Group
SNOMED Implementation Course
SNOMED Authoring Level 1



Lea Miharsa (she/her)

SNOMED Managed Service User Group
Content Managers Advisory Group
SNOMED Implementation Course
SNOMED Authoring Level 1



Demi Meiklejohn (she/her)

NZCDI Product Owner
SNOMED Implementation Course



Evan Li (he/him)

SNOMED Member Forum
SNOMED Tech Bro
NZ Health Terminology Service



Mia van Dorp (she/her)

SNOMED Member Forum
SNOMED for Data Analysts
SNOMED Authoring Level 1



Agenda

- Welcome and opening karakia
- SNOMED NZ Edition April 2026 release
- NZ Health Terminology Service news
- SNOMED International April 2026 conference recap
- CanShare content update
- Q & A
- Closing karakia



SNOMED NZ Edition April 2026 release

Lea Miharsa

<https://mlds.ihtsdotools.org/#/landing/NZ?lang=en>



[Home](#) [Release Packages](#) [Language ▾](#) [Login ▶](#)

New Zealand

Member Licensing and Distribution Service

Welcome

- › MLDS is a tool used by the NRC in New Zealand to manage the Affiliate Licensing of SNOMED CT including new applications, renewals and usage reporting within New Zealand and where relevant in non member countries.
- › For further details, please refer to the [SNOMED International website](#) or the [Frequently Asked Questions](#).

[Register](#)

or [login here](#)

SNOMED International SNOMED CT Browser

The SNOMED International SNOMED CT Browser provides ways to browse and search SNOMED CT. The browser has been implemented as part of development within the SNOMED International Open Tooling Framework, by the SNOMED International and its development partners.

The Browser is provided by SNOMED International to anyone for reference purposes. The interface and REST APIs are **not** to be used as part of production systems in health care settings. Any abuse of the REST APIs will result in the offending IP address being banned from accessing the browser.

Please provide any feedback on the browser by clicking on the feedback button at the top of the page. Your feedback is essential to the evolution and improvement of this service. Please visit the [SNOMED CT Content Request Service](#) to provide content feedback.

This site has been optimized for the Google Chrome browser and **it will not work with Internet Explorer.**

International Editions

- Go browsing... International Edition 2026-04-01
- Go browsing... Spanish Edition 2026-02-10
- Go browsing... International Derivatives 2025-07-01

Additional Information

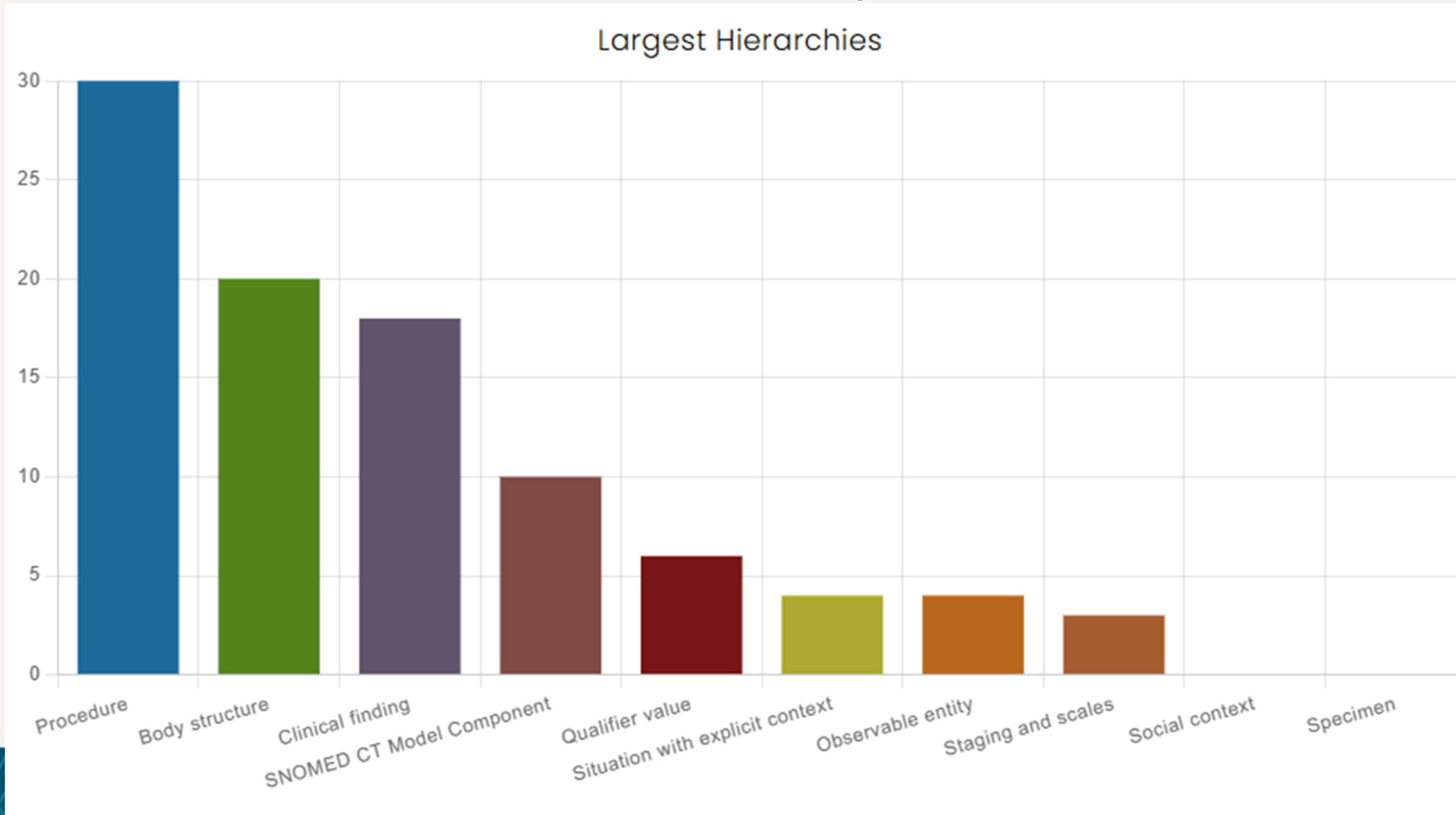
- Release Stats
- MRCM Browser

Local Extensions

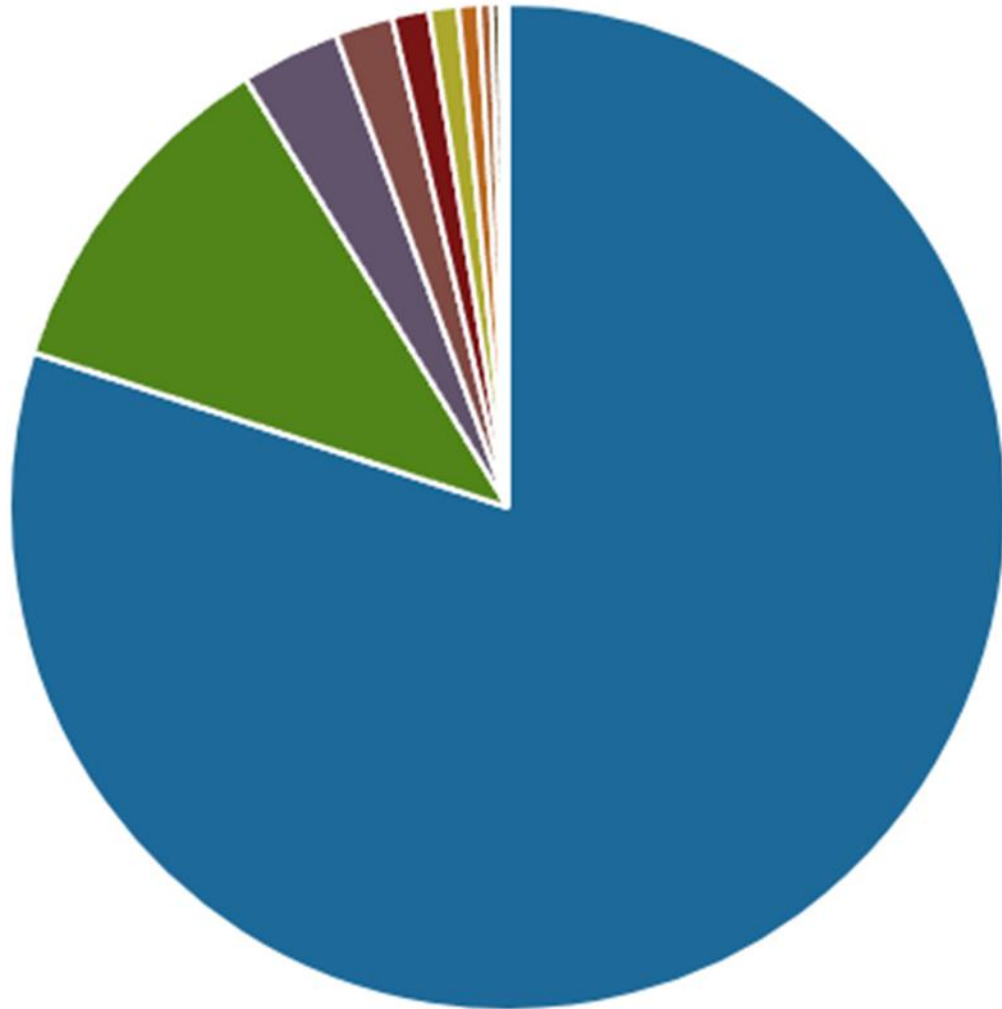
- Go browsing... Argentinian Edition 2026-02-20
- Go browsing... Australian Edition 2026-03-31
- Go browsing... Austrian Edition 2026-03-15
- Go browsing... Belgian Edition 2026-04-15
- Go browsing... Canadian Edition 2026-02-28
- Go browsing... Chilean Edition 2026-03-15
- Go browsing... Czech Republic Edition 2025-01-27
- Go browsing... Danish Edition 2026-03-31
- Go browsing... Estonian Edition 2025-11-30
- Go browsing... Finnish Edition 2025-11-15
- Go browsing... French Edition 2025-06-21
- Go browsing... Germany Edition 2025-11-15
- Go browsing... Irish Edition 2026-03-21
- Go browsing... Jamaican Edition 2025-03-28
- Go browsing... Korean Extension 2025-12-15
- Go browsing... Netherlands Edition 2026-03-31
- Go browsing... New Zealand Edition 2026-04-01
- Go browsing... Norwegian Edition 2026-04-15
- Go browsing... Swedish Edition 2025-11-30
- Go browsing... Swiss Edition 2025-12-07

SNOMED CT Descriptive Statistics

Active concepts in SNOMED CT among all first level hierarchies



New Concepts



Procedure 80 %

Clinical finding 11.2 %

Qualifier value 3.2 %

Observable entity 1.9 %

Body structure 1.2 %

• Shrimp/🔥 SNOMED CT Browser (csiro.au)



Te Whatu Ora
Health New Zealand



Terminology

ECL

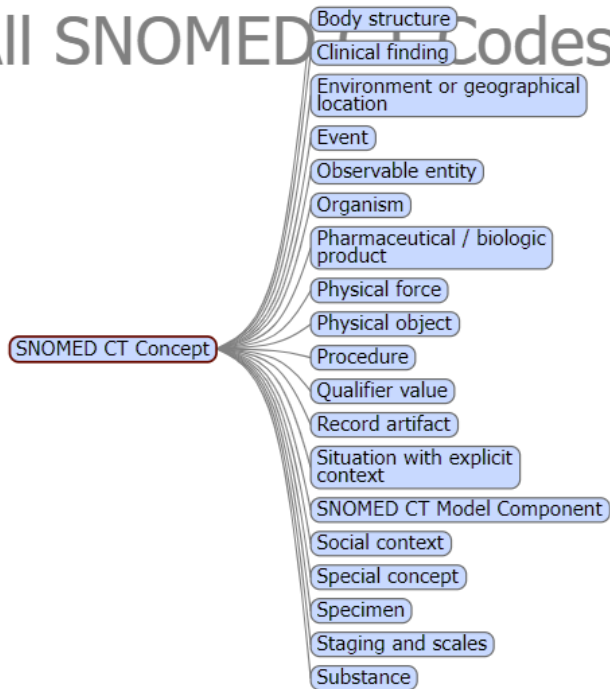
Logout...

Ontoserver

https://nzhts.digital.health.nz/fhir

Go

All SNOMED CT Codes



© Australian e-Health Research Centre

SNOMED CT Concept

effectiveTime 20020131

moduleId SNOMED CT core



CodeSystems ValueSets ECL

filter codesystems

- SNOMED CT
- LOINC
- Additional Authorisation
- AdministrativeGender
- Admission source code
- Admission type code
- International - Latest
- All SNOMED CT Codes

search terms

- 24 hour stool specimen (specimen)
- Abrasion of vagina, infected (disorder)
- Accelerometry (procedure)
- Adalimumab therapy (procedure)
- Ambulation without limitation (regime/therapy)
- Anteroposterior diameter of chest (observable entity)
- Approach via colostomy (qualifier value)
- Argininosuccinate lyase deficiency (disorder)
- Bananaquit (organism)
- Benign neoplasm of skin of finger (disorder)
- Bilateral sensation of blocked ears (finding)
- Blepharoptosis, myopia, ectopia lentis syndrome (disorder)
- Cephenemyia trompe (organism)
- Combined abnormal curvature (morphologic abnormality)
- Complement C3a measurement (procedure)
- Congenital subluxation of carpus (disorder)
- Cryptosporidium muris (organism)
- Cutis laxa with complement deficiency (disorder)

The logo for SNOMED NZ Edition features a dark blue and purple gradient background with a repeating geometric pattern of diamonds and zig-zags. The text "SNOMED NZ Edition" is centered in white, bold, sans-serif font.

SNOMED NZ Edition

SNOMED International Edition

SNOMED NZ Extension

Reference sets

Language reference sets

Maps

New and updated content

SNOMED International promotion

- 37 new concepts
- 2 new descriptions
-

New NZ Extension content

- 749 new concepts
- 3831 new descriptions

New and updated content

- **•ACC claim reference set**
- **•Hospital in the Home**
- **•ACC translation table map**
- **•Emergency care reference sets**
- **•Health service type reference set**
- **•Ophthalmology concepts**
- **•Sport related concepts**
- **•PUC reference sets**



Release cycle changes

Upcoming releases

- 20 July 2026
- 20 October 2026
- 20 April 2027

Upcoming changes

File Naming Convention for Simple reference set

The file name will change from:

der2_Refset_101000210108SimpleRefsetSnapshot_
NZ1000210_20260401.txt

to

der2_Refset_101000210108SimpleSnapshot_NZ1000
210_20260720.txt

Email us:

snomed@tewhatuora.govt.nz



NZ Health Terminology Service

Evan Li

NZHTS Release News

- SNOMED CT NZ Edition April 2026
- LOINC 2.82 and NZPOCS (six-monthly release)
- MedDRA 29.0 (six-monthly release)
- NZ Medicines Terminology (monthly release)
- National Occupation List (NOL) V3.0.0
- ACC claim form value sets
- Territorial Authority and Territorial Authority Local Board Classification code sets
- Location type code update for Health Provider Index (HPI)

Examples

- How to query emergency care presenting complaint reference set and save results in CSV format using Postman
- Solutions for downloading SNOMED CT reference sets
- A systematic way to identify all codes that are children of a given code within SNOMED CT e.g. find all descendant codes of the 'Diabetes mellitus' concept

Digital Services Hub – how to request a NZHTS API key

<https://www.tewhatauora.govt.nz/health-services-and-programmes/digital-health/digital-services-hub>

The screenshot shows the Digital Services Hub website. A red arrow labeled '1' points to the main heading 'Digital Services Hub'. Another red arrow labeled '2' points to the 'Explore APIs and digital services' card in the 'Also in this section' area.

1

Home / Health services and programmes / Digital Health / Digital Services Hub

Digital Services Hub

The Developer Portal, also known as the Digital Services Hub, is a platform developed by Health New Zealand to streamline and secure access to New Zealand Health Data under the custodianship of Health New Zealand | Te Whatu Ora. It provides a unified, secure, and standards-driven environment to integrate with Health NZ's hosted Data and digital services.

2

Also in this section

- Health services and programmes**
 - Abortion services
 - Aeromedical Commissioning Programme
 - Aged residential care
 - Antenatal screening for Down syndrome and other conditions
- Introduction to the Digital Services Hub**

Learn about the Digital Services Hub and its resources, tools and documentation for accessing and integrating with our digital assets.

→
- Explore APIs and digital services**

Search our catalogue of APIs and digital services to discover what's available now and what's coming soon.

→
- Digital Service Hub Subscriber Onboarding**

This space is dedicated to Health IT product owners, vendors, and developers who wish to subscribe to Health New Zealand's digital assets. It outlines the standards and compliance expectations that must be met prior to integration and provides a clear step-by-step guide for onboarding to the Digital Services Hub.

→

3

Home / Health services and programmes / Digital Health / Explore APIs and digital services

Explore APIs and digital services

Search our catalogue of APIs and digital services to discover what's available now and what's coming soon.

4

New Zealand Health Terminology Service API

Access terms, codes, synonyms and definitions for clinical documentation and reporting in health information systems and applications.

→

5

New Zealand Health Terminology Service API

Access terms, codes, synonyms and definitions for clinical documentation and reporting in health information systems and applications.

Also in this section

Health services and programmes

- Abortion services
- Aeromedical Commissioning Programme
- Aged residential care

On this page

- ↓ Brief description
- ↓ Overview
- ↓ Who can use this API
- ↓ Use cases
- ↓ Onboarding and implementation
- ↓ API types
- ↓ Technical
- ↓ Learn more

6

Onboarding and implementation

To start using the terminology service API, first visit our [SNOMED portal](#) to register as a SNOMED user and then go to the NZHTS site to accept the terms of use and create an NZHTS account.

Complete the online onboarding request form next. You will need to provide information about your organisation and the application you will integrate with.

[Onboarding request form](#)

Once your onboarding request has been approved, you will be provided with the information to start integration. The onboarding team will be in touch if further information is required.

If you require help or have any questions regarding the onboarding process, please contact our team by completing a general enquiry form.

[General enquiry form](#)

Contact us

We welcome your feedback and participation. Email us at standards@tewhatuora.govt.nz or join our chat site at ehealthforum.nz ↗



SNOMED International April 2026 conference recap

Alastair Kenworthy

WELCOME TO AUSTRIA



April 2026 Business Meetings

APRIL 12-16, 2026 | VIENNA, AUSTRIA

SNOMED
International

Leading healthcare
terminology, worldwide

KEYNOTE REMARKS

Rachel Dunscombe

CEO, HL7 International



HL7
International

Start With The End In Mind

A long, straight asphalt road stretches into the distance under a blue sky with clouds. The road is flanked by green fields and brown hills. The road has a white dashed line down the center and white solid lines on the sides. The hills in the background are brown and rocky, with some green grass on the slopes. The sky is a mix of blue and white clouds.

Interoperable health data as key Health System Infrastructure



The Target Operating Model (TOM) for New Care Delivery

The Enabled Models of Care:

Proactive Intervention: Moving from "waiting for symptoms" to real-time risk stratification via AI-powered data streams.

Decentralised "Hospital-at-Home": High-acuity care delivered in the living room, facilitated by secure, verifiable sharing of health information.

Outcomes-Driven "Always-On" Care: Shifting from episodic visits to a continuous care relationship where the patient and care team are empowered to make informed decisions anytime, anywhere.

The Foundation: Privacy Preserving Machine-Discoverable Data.

This provides the "liquid" data needed for real-time monitoring and longitudinal patient summaries.

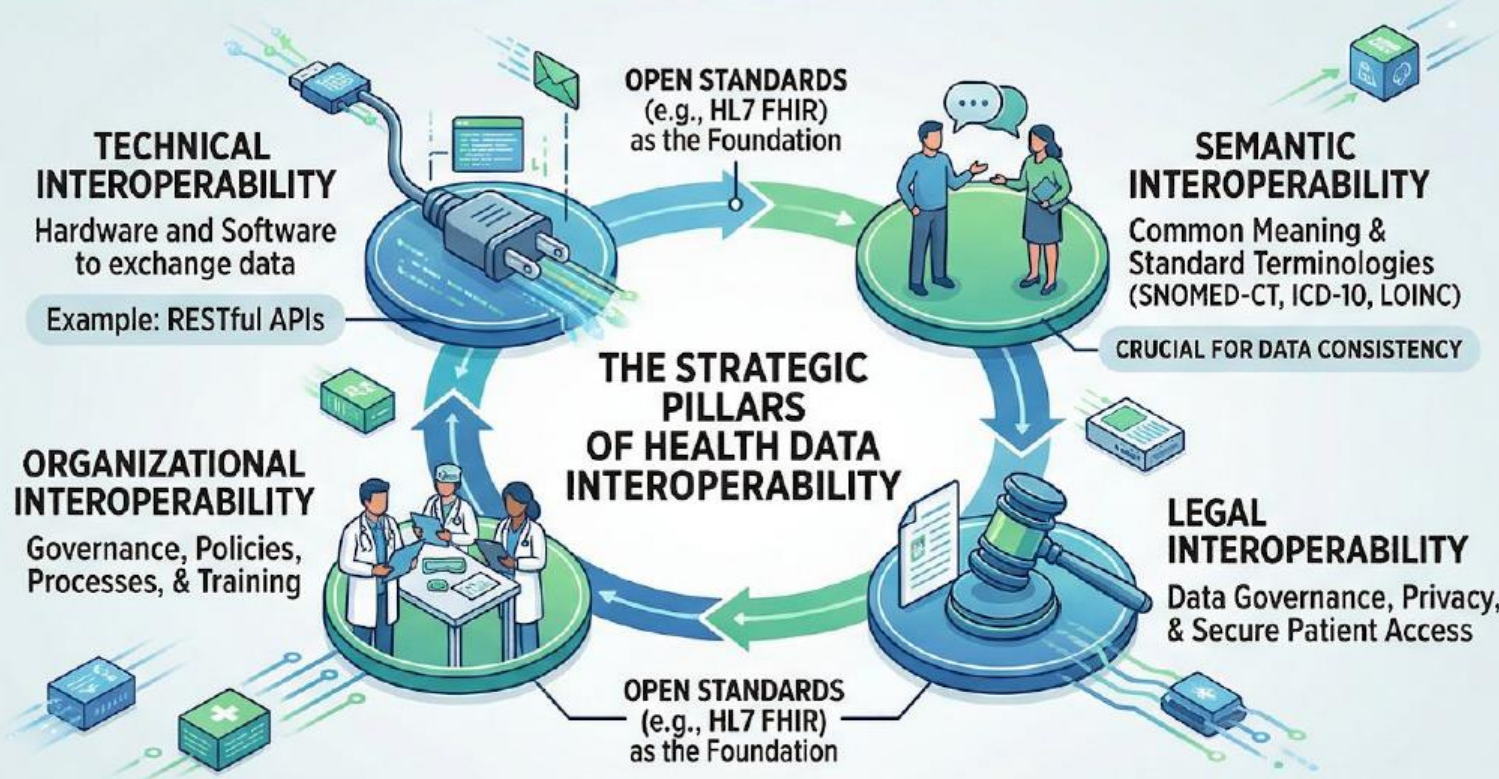
The Intelligence: Complexity Reduction

Intelligence act as the "Autopilot," navigating governance and administrative workflows.

Technology and data availability allow the clinician to focus purely on medical decision-making.

'UNLOCKING THE VALUE OF HEALTH DATA INTEROPERABILITY: OECD INSIGHTS'

A modern infographic based on the uploaded OECD document "OECD Interoperability Report - Draft v1.0.docx"



THE BENEFITS: TRANSFORMING HEALTH SYSTEMS



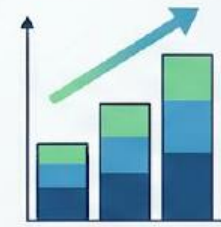
BETTER PATIENT CARE

- Person-Centric Records
- Increased Safety
- Reduced Diagnostic Errors



OPERATIONAL EFFICIENCY

- SAVE EUR 1.95B ANNUALLY (Finland estimate)
- Reduced Repetition



ECONOMIC VALUE

ESTIMATED VALUE: 2.70% TO 6.64% OF TOTAL HEALTH SYSTEM EXPENDITURE → Potential up to 17% in some scenarios

Canada: \$9.4B CAD Projected Efficiency Gains



GLOBAL CHALLENGES & INNOVATION

- Cross-Border Care
- Scaled Medical Research
- Tackling Rare Diseases

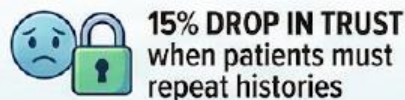
CHALLENGES & STRATEGIES FOR SUCCESS

TECHNICAL & OPERATIONAL BARRIERS



MANDATE OPEN STANDARDS & OPEN PLATFORMS

PEOPLE & PUBLIC TRUST



BUILD TRUST with transparent data rights


GOVERNANCE & LEADERSHIP



DEVELOP CLEAR STRATEGIC ROADMAPS



THE PARADOX OF OPEN STANDARDS: STRATEGIC CHALLENGES IN 2026.

Balancing Innovation, Adoption, and Global Sustainability




1. THE 'IMPLEMENTATION GAP' VS. SPECIFICATION VELOCITY

- Standards evolve faster than legacy vendor adoption
- 'Versioning Fatigue' divides the community
- Striving for a balance: innovation vs. stability




2. SEMANTIC COHESION AT SCALE

- Bridging Structural (HL7) & Semantic (SNOMED) layers
- The high effort of 'Research-Ready' (OMOP) mappings
- Maintaining a single 'Source of Truth'



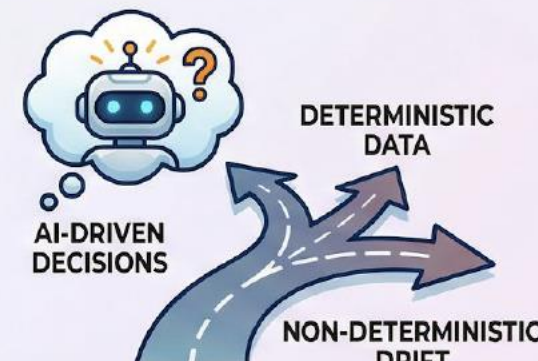
3. SUSTAINABILITY OF THE 'OPEN' MODEL

- High demand for 'Free' artifacts creates resource strain
- Balanced funding vs. Global Equity
- Ensuring rigorous, safe multi-stakeholder governance



4. THE AI & 'BLACK BOX' PRESSURE

- LLMs bypass standards by 'guessing' mappings
- AI must be grounded in validated terminologies
- Preventing drift into non-deterministic silos





The Future Is Participatory

Collaborate: Working together as standards bodies is essential without friction. We all have a shared mission.

A Growing Communities: This critical infrastructure requires the active participation of clinicians, patients, policy makers, and technologists to ensure technology serves human health.

Real-World Focus: Solutions designed to solve clinical, operational, or equity-focused problems like ambient documentation and bias mitigation.

From “Compliance” to “Building a Legacy”: A mission that moves beyond "checking a box" to building the permanent digital backbone of healthcare.

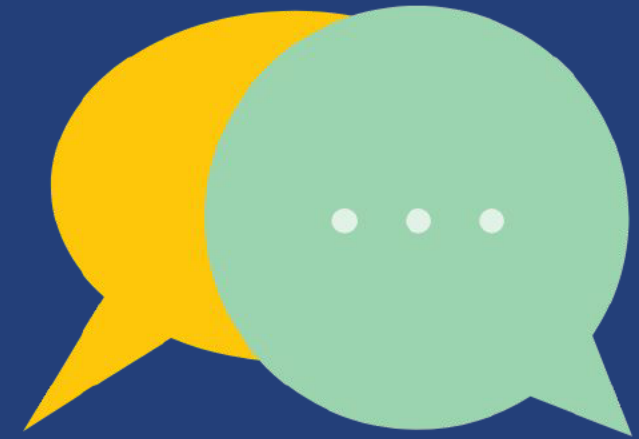
Successes and Lessons: Sharing what works and what doesn't, building evidence and bodies of knowledge.

A glowing neon sign in a city at night. The sign is rectangular with rounded corners and a thick yellow neon border. Inside the border, the words "COMMUNITY" and "UPDATES" are written in a stylized, double-lined neon font. The background shows a dark city street with blurred lights and buildings.

COMMUNITY
UPDATES

SESSION AGENDA

2026 SNOMED INTERNATIONAL COMMUNITY UPDATES & DISCUSSION



GLOBAL REPORT

Liara Tutina

CONTENT HEADLINES

Sarah Lukha

CLINICAL ENGAGEMENT

Ian Green

PRODUCT & SERVICES
& TECHNOLOGIES

Rory Davidson

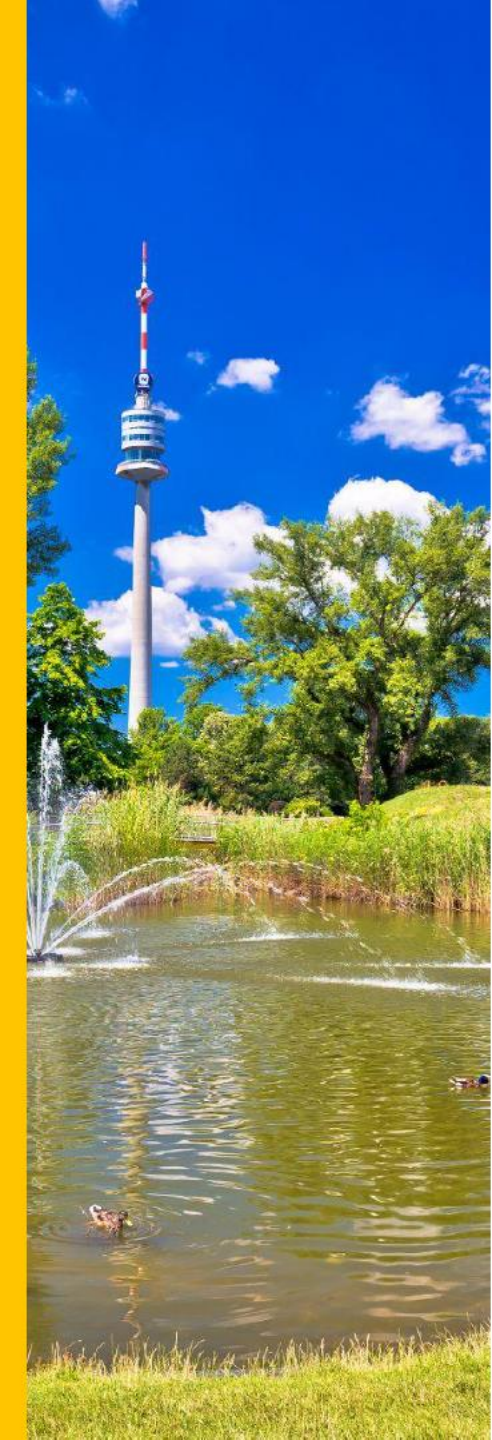
Europe

- **Welcomed Latvia joining as Member of SNOMED International**
- Onboarded Hungary
- France organised Projectathon ANS 2026 including Terminology Services testing. Supported IHE European Connectathon with Terminology Services.
- United Kingdom progressing assessment to join Managed Services
- Italy and Ukraine progressing with their SCT pilots
- Enhanced SNOMED CT GPS well received by EU. Facilitates inclusion of SNOMED CT into the EHDS.
- Active participation in xShare and XiA. Contribution to public consultations about EHDS implementing acts. Engaged with the Support centre for the EEHRxF.



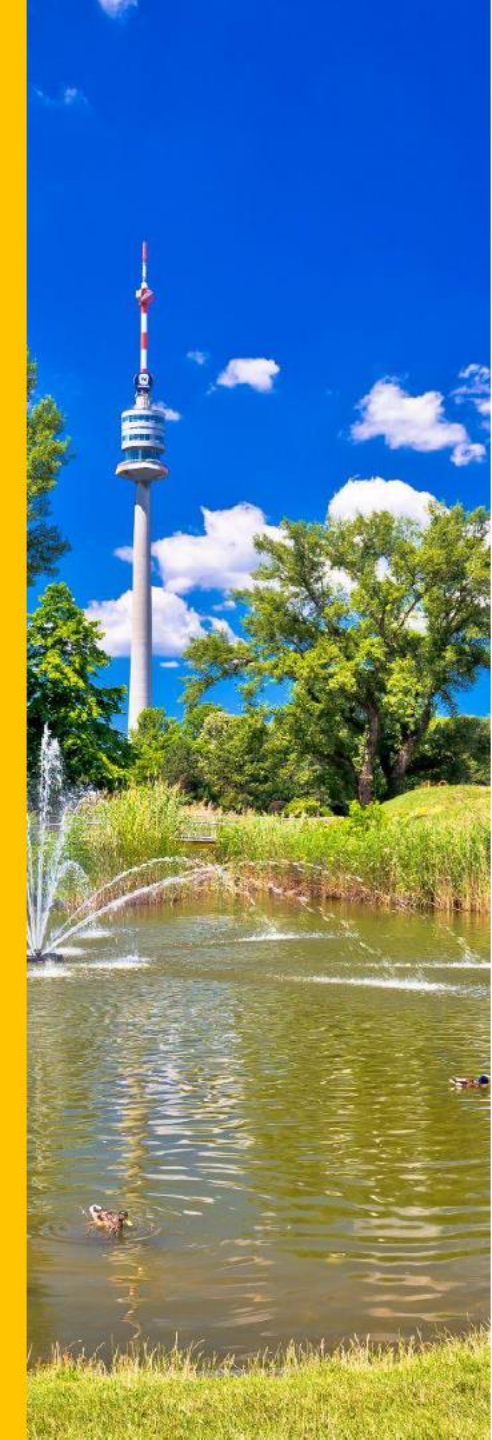
Middle East and Africa

- **Welcomed South Africa has become the first African Member of SNOMED International**
 - SNOMED is currently used in the eCCR EHR product used in 53 public hospitals across Western Cape
 - 175 primary care clinics will be adopting it by mid-year
- In discussions with Ethiopia for a Regional Membership limited to Addis Ababa
- Discussing with Abu Dhabi the potential of a joint development partnership
- SNOMED in Jordan event has been deferred. New tentative date is September 29, with HIMSS Middle East scheduled for September 30



Asia and Pacific

- **Welcomed The Republic of Uzbekistan joining as the member of SNOMED International**
- Onboarding Uzbekistan ongoing
- Presentation delivered at Digital Health Week NZ, and stakeholder engagement at Australia's INSPIRE and AEHRC Colloquium
- Discussions underway with the Pacific Health Information Network (PHIN) about collaborative partnership
- Membership process initiated with the Philippines



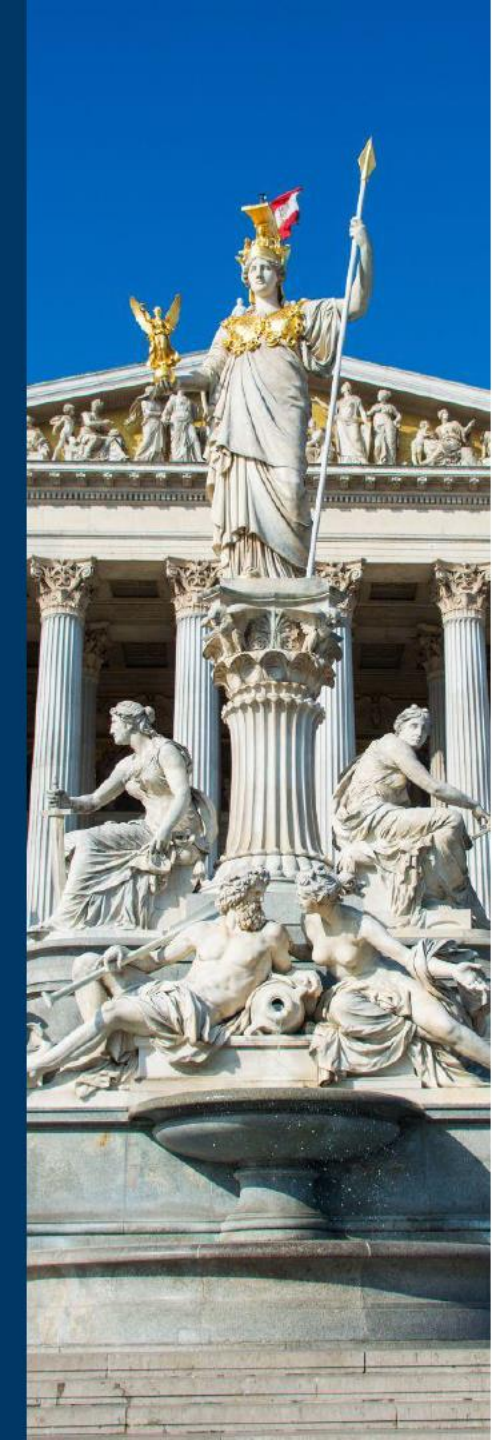
Member priority progress

Five top content areas identified by the Member Forum in early 2025:

- Laboratory - Third version of the LOINC Ontology released in March 2026 - >45,000 concepts
- Substances - Backlog has been resolved. New content submitted as CRS requests. Proactive addition of EMA substances underway.
- Imaging - Identification of extension content, lateralized content being promoted; formation of Radiology Project Group
- Mental Health - Newly formed Mental Health Project Group
- Drug extension model - Active DEUSG; promotion of MP/MPF concepts underway

Projects with Collaborative Authoring

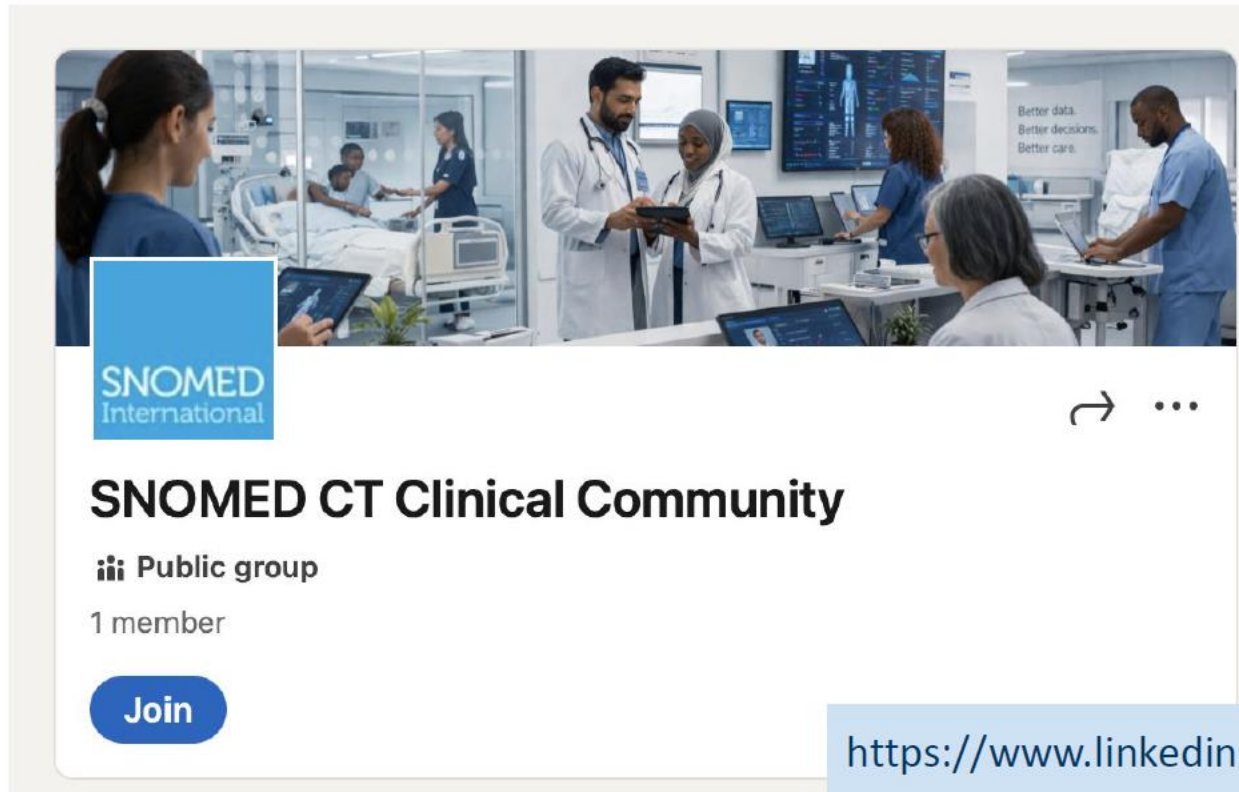
- Kidney Biopsy Codes
 - External author in training
- GMDN Agency - devices
 - External author in training
- HPO - Content addition and mapping
 - External author identified
- Mental health - new project
 - External author identified
- Drug-related substances
 - External author actively contributing
- Microbiology - reconstituted project group
 - External author to be identified
- Radiology - new project group formed
 - External author to be identified



SNOMED CT Clinical community

Purpose

- To develop a community of engaged clinicians to inform on the quality of SNOMED CT content and its future development



SNOMED International

SNOMED CT Clinical Community

Public group

1 member

Join

<https://www.linkedin.com/groups/18127008/>

Software Development

Authoring Platform Rewrite

Survey and design completed; groundwork in place. Focus remains on the rewrite rather than adding new features.

Self Service Release

Continued progress with key groundwork delivered to support future self-service capabilities.

Translation Tooling PoC

Proof of concept completed to explore translation workflows and integration options.

Snowstorm FHIR Compliance

Ongoing work to align Snowstorm's FHIR API with the specification, in order to support the generation of FHIR Implementation Guides as a part of HL7's ecosystem of terminology servers.

General Enhancements & Maintenance

Ongoing work across MLDS and CIS, with current focus on the Browser UI update.

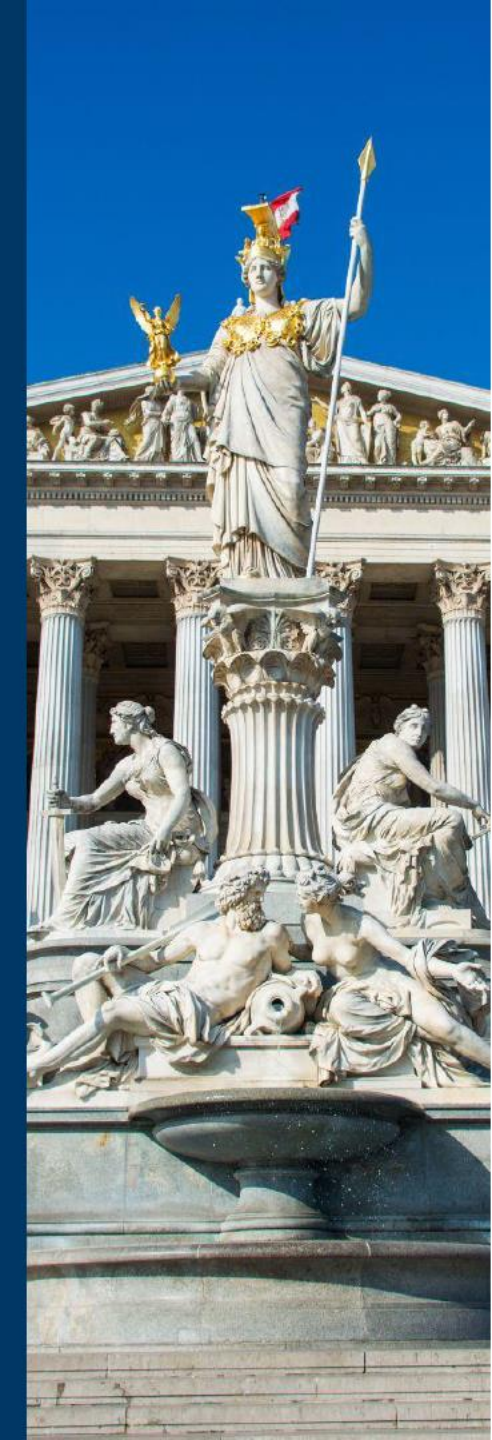
Technical Operations

Infrastructure

Last 6 months	Next 6 months
<ul style="list-style-type: none"> ● Atlassian Tooling / SSO migration post migration tasks ● Browser AWS Cloudfront/WAF Proof of Concept ● MySQL version upgrades (AWS RDS instances) ● Testing of new AI-supported Browser Hosting PoC 	<ul style="list-style-type: none"> ● Elasticsearch infrastructure changes ● Elasticsearch version upgrades ● MySQL version upgrades (local deployments) ● OS version upgrades ● Rollout of new AI-supported Browser Hosting

Managed Service

<ul style="list-style-type: none"> ● Updated the MS Agreement to support outcomes from the MS Review ● Rollout of the new JIRA Service Desk ● Implementation of AI into Support process 	<ul style="list-style-type: none"> ● Support the testing of the UI refactor ● Updates to JIRA Service Desk ● Addition of AI Support Agent ● New Improvement/Change Process ● Engagement with UK NRC
--	--



AI integrates seamlessly across the SNOMED International work programme



SNOMED CT extends beyond reference terminology, serving as a structuring layer for NLP, entity linking, and AI safety tooling. The AI roadmap consists of four mutually reinforcing workstreams at varying maturity levels.

WORKSTREAM 01

Translation

Reducing resource burden for local adoption via AI-validated workflows, establishing translation-as-a-service.

WORKSTREAM 02

Benchmarking

Using the world's largest annotated dataset to set the standard for clinical entity linking performance.

WORKSTREAM 03

Content Quality

Applying AI directly to the authoring process itself to improve precision and internal consistency.

WORKSTREAM 04

Platform Integration

An MCP server making SNOMED CT accessible to the same AI systems the benchmark measures.

CanShare April 2026 SNOMED CT Update

Matt Munro

Senior Advisor

Data & Analytics, Te Aho o Te Kahu

CanShare SNOMED CT Release updates



April 2026 NZ SNOMED CT edition includes:

- **79** new concepts
- **5** new CanShare reference sets
- **72** updated reference sets (total **435** CanShare reference sets)

... to support cancer data collection.



CanShare language reference set:

231621000210105 |New Zealand English CanShare context language reference set|

CanShare SNOMED CT Release updates



Canshare has **2069** active FHIR ValueSets available on the NZHTS

- All ValueSet URLs start with 'https://nzhts.digital.health.nz/fhir/ValueSet/canshare-'



Customisation: ValueSets allow for customisation of codes available to different service or tumour stream requirements.



Canshare has one active ConceptMap.

- canshare-select-valueset-map



Implementation: This concept map has been implemented into an electronic prescribing system for cancer in the Northern region (Raurau Ngaehē)



Current state: In the last 6 months, we have finished incorporating cancer grading, staging, and prognostic factors into the ConceptMap (adding to the existing fields eg, cancer service, type, histology).

CanShare SNOMED CT Release updates

Breast Cancer Foundation National Register: radiation oncology, surgery, reconstruction, chemotherapy, endocrine and pathology content to support the new register.

Systemic anti-cancer therapy regimens: enhancement of the modelling of regimens to align with updated editorial guidance and authored 598 new concepts.

Grading, Staging & Prognostic scoring relevant to solid cancer treatment to support Raurau implementation

Histologic behaviour of solid cancers: streamlined sets of histology grouped by behaviour to support Raurau and future pathology reporting implementations.

Ancillary study tests and results: nomenclature updates to existing SNOMED CT content to align with new international standards; supporting cancer treatment eligibility and reporting of breast and colorectal cancers

CanShare Key Development areas



AI-Assisted Structured Anatomical Pathology Reporting

- Collaboration with Deloitte/AWS and HNZ
- Utilises CanShare SNOMED CT-coded FHIR Questionnaires
- Generates SNOMED CT-coded FHIR Questionnaire Response based on pathologist dictation
- Enables near real-time flow of SNOMED CT-coded data into CanShare's analytic infrastructure



Ancillary studies

- Finalising SNOMED CT templates to support modelling of ancillary study tests and findings
- The team presented this work at the October 2025 SNOMED International business meeting and SNOMED CT Expo
- Engaging with SNOMED International to get modelling approach adopted internationally

Accessing CanShare Resources

BROWSE

CanShare ValueSets and ConceptMap demo

- <https://canshare.co.nz/canshare/vsLookup.html>
- <https://canshare.co.nz/canshare/cmTester.html>

DOWNLOAD

NZ SNOMED CT edition from MLDS distribution service

- <https://mlds.ihtsdotools.org/#/landing/NZ>

CONNECT

To the New Zealand Health Terminology Service

- Register with Health New Zealand
- <https://nzhts.digital.health.nz/fhir> (REST API)

CONTACT

CanShare team email: canshare@teaho.govt.nz

Q & A



Got further questions?
Reach us here!

SNOMED CT NZ Edition

NZ Health Terminology Service

SNOMED requests: snomed@tewhatuora.govt.nz

NZHTS and other standards requests: standards@tewhatuora.govt.nz

eHealth Forum: <https://ehealthforum.nz/c/cops/standards>

Upcoming events



SNOMED October Business Meetings **SNOMED CT 2026 Expo**

Thursday 17 – 23 October 2026

Where: Intercontinental Sydney Hotel, Australia
and online

Stay up to date with the
[SNOMED events calendar](#)



Next month **HISO Lab hui**

Wednesday 27 May 2026

Where: Online, teams

Closing karakia

He Karakia Whakakapi

Kia whakairia te tapu

Kia wātea ai te ara

Kia turuki whakataha ai

Kia turuki whakataha ai

Haumi e. Hui e. Tāiki e!

Restrictions are moved aside

So the pathway is clear

To return to everyday activities